

CUTANEOUS EQUIDAE NEOPLASMS IN COSTA RICA: A RETROSPECTIVE STUDY (1994-2004).

Alexis Berrocal, Departamento de Patología, Escuela de Medicina Veterinaria, Universidad Nacional, Heredia, Costa Rica.

Current address: AP-904, Heredia, Costa Rica. www.histopatovet.com

Presented in the 23rd Meeting of the European Society of Veterinary Pathology, Naples (Italy) 7/10-September, 2005.

Aim to study: to describe the cutaneous equine neoplasias in Costa Rica.

Materials and methods: a clinical and pathological retrospective study from 1994 to 2004 was carried out.

Results: 250 equidae skin biopsies were processed, 88 cutaneous neoplasms were diagnosed 86 in horses and 2 in burros.

The three most common neoplasms observed were:

First group was **sarcoid**, with 54,5% (46 horses and 2 burros). The breed predilection in this group was Criollos (Mixed breed) with 60.8%. There were 26 males and 16 females. The average age was 4.4 years. In 21 horses the sarcoid tumour was a single mass. The main anatomic locations were the limbs with 15 cases. See the following 4 pictures.



Fig.1. Left. Multiple nodular masses some ulcerated. Fig.2. Limb with a single ulcerated proliferative mass.

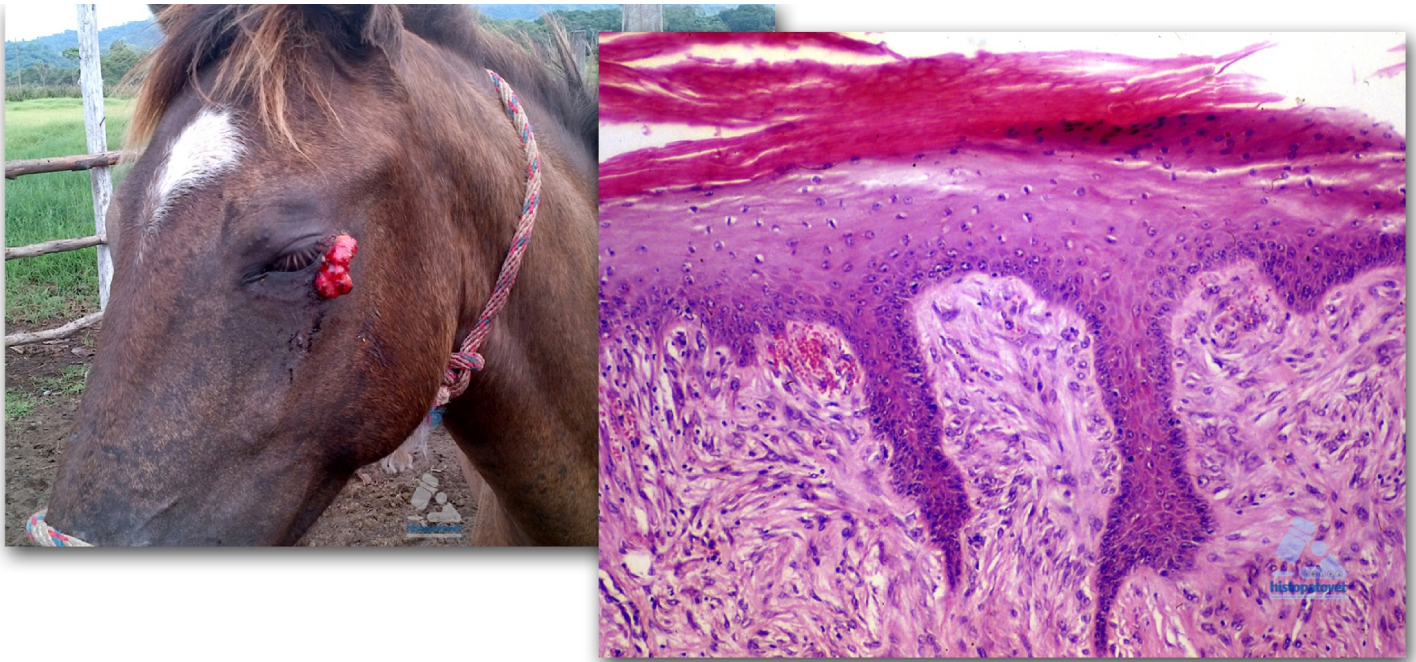


Fig.3. A periocular presentation. Fig.4. A biopsy (dermis) showing the characteristic histopathological changes of sarcoid. H.E. Stain.

Second group was squamous cell carcinoma (17.0%), 10 Criollo breeds. In 7 horses, the tumour growth was reported in white skin areas. The mean age was 8.84. There were 8 females and 7 males. Ten carcinomas (66.6%) were present in the head. See next 4 photos.



Fig.5. Left. Ulcerative area with satellite lesions. Fig. 6. Scrotal ulcerated mass.

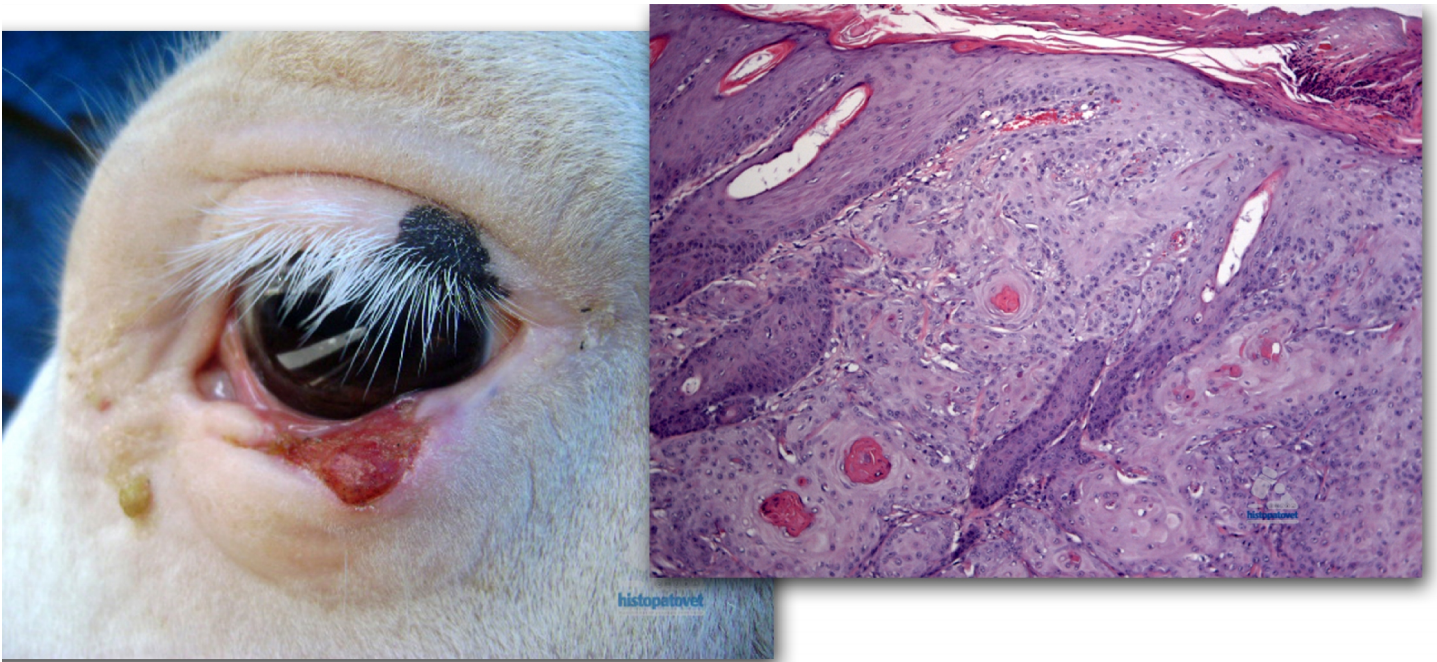


Fig.7. Ulceration in the ventral eyelid. Fig. 8. Dermis showing a squamous cell carcinoma.

The third group was **melanocytic tumours** (13.6%). All in grey white horses. The mean age was 11.6. There were 7 males and 5 females. In 8 cases (66.6%) the tumour was located at the anal region.

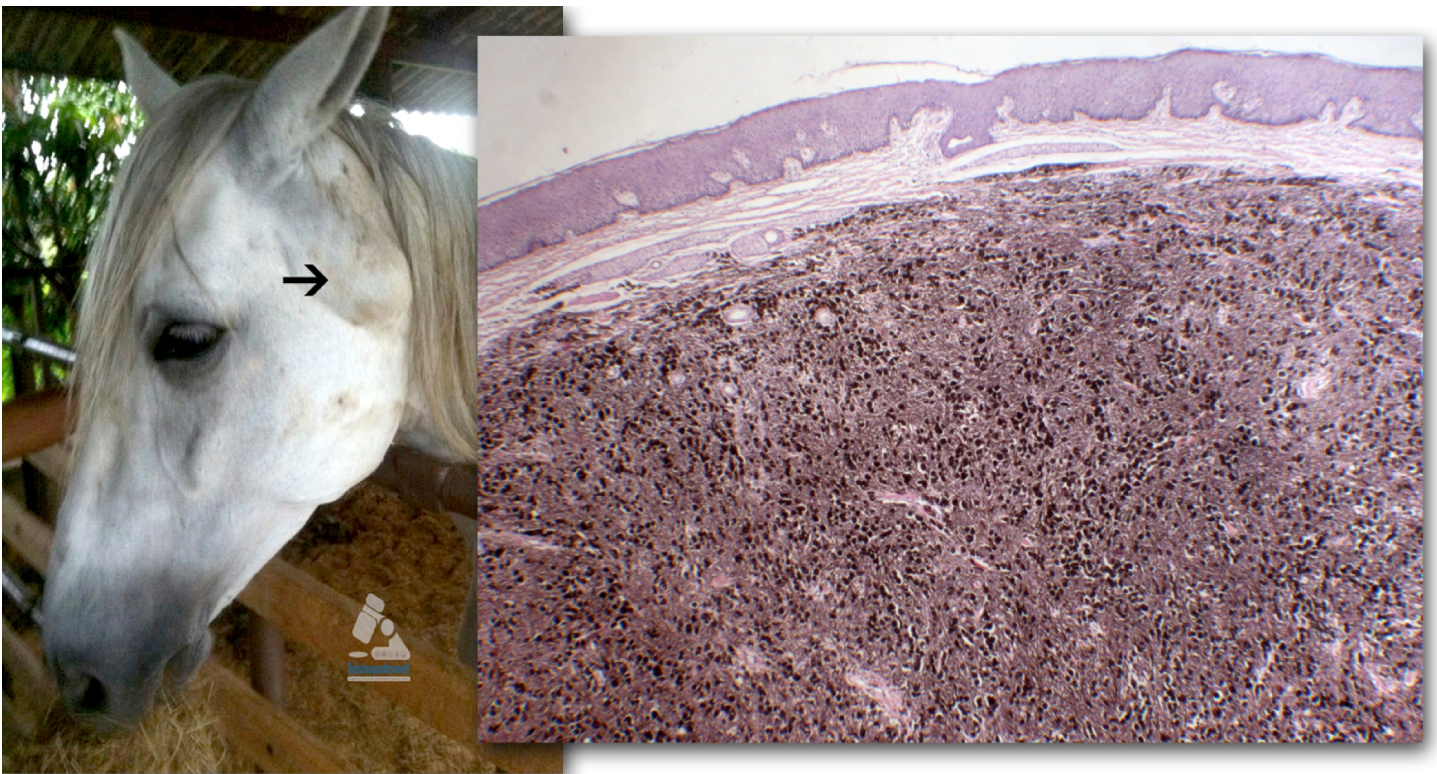


Fig.9. A subcutaneous nodule (arrow) in the temporalis area. Fig.10. A histopathological image

Conclusion: as it has been reported elsewhere we found the same three most common skin neoplasms. However, our epidemiological data especially with sarcoids and squamous cells tumours have some differences with others countries.